

Transonic Flow-QC[®] Focus

A measurable improvement in Quality Care

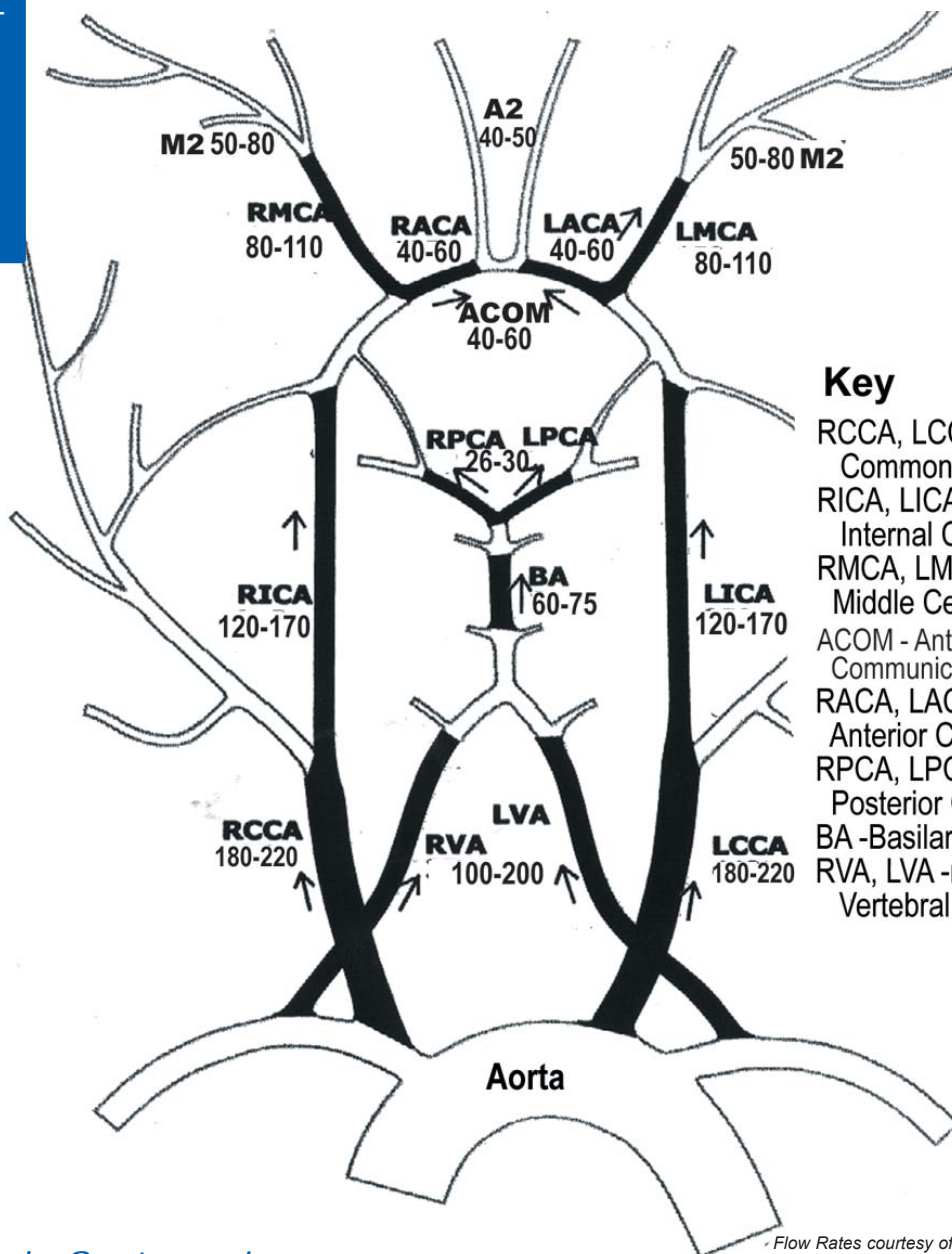
Focus on Neuro

Neurosurgery

Expected Volume Flow Rates after Aneurysm Clipping Surgery (ml/min)

Transonic cerebral blood flow measurements:

- quick
- direct
- real time
- quantitative



Key

- RCCA, LCCA -right & left Common Carotid Artery
- RICA, LICA -right & left Internal Carotid Artery
- RMCA, LMCA -right & left Middle Cerebral Artery
- ACOM - Anterior Communicating Artery
- RACA, LACA -right & left Anterior Cerebral Artery
- RPCA, LPCA -right & left Posterior Cerebral Artery
- BA -Basilar Artery
- RVA, LVA -right & left Vertebral Artery